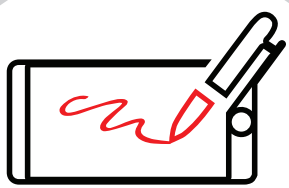


WHAT IS Wizzio® eSign?



Wizzio® eSign
is a Digital
eSignature Suite

Centralizes all signing options into one platform, and provides a unique toolkit for all digital signing needs. A unique solution to implement and manage a fully digital document signing process to save time, costs and improve document traceability and security.

FEATURES / Key Benefits



Save on printing and handling costs and decrease the time taken to complete agreements.



Forget paperwork and simplify processes. With Wizzio eSign, documents are managed online, signatures are instantly made, and processes fully digital.



The Wizzio eSign Suite provides multiple digital signature methods, to support different customer preferences, risk and processes.



Sign instantly on any channel and see the signature real-time on any other channel, providing an truly omnichannel experience for the signing process.



Wizzio eSign can be extended to support a full range of customization requirements, from UI to integrations with external providers.



Document creation, access, changes and signatures are fully traceable and auditable, providing a complete vision of the process.



eSign is compliant with eIDAS, the European regulation for electronic identification and trust services for electronic transactions in the European Single Market, and with the Mobile Digital Key (the Portuguese solution for electronic identification in most public and some private company's websites).



Wizzio eSign seamlessly integrates with existing systems and channels, new and old, to provide the best experience for both customer and user.

DIGITAL MOBILE KEY

- Using "digital mobile key" also known in Portuguese as "chave móvel digital" is a 2FA (two factor authentication) enabling remote digital signing.
- This way of signing requires that the user has a mobile device and a password, which triggers an OTP (one-time password) to be sent to his device. Thus using the OTP to sign a given document.
- This way of signing is a strong authentication method enforced by an asymmetric PKI key, bringing enforcement to contract.
- eSign is OOTB (out-of-the-box) integrated with this mechanism of signing.
- Signing through this method is irrevocable and fully supported by law setting a new subset of remote use cases, from signing contracts to onboarding, loans or mortgages.



REFERENCES

bancoctt

Millennium
bcp

ActivoBank
by Millennium

Banco Económico

ATLANTICO

BPI

Functionalities	Other Solutions	Wizzio eSign
Timestamp Support, HSM, OTP, 3 rd party reliable/Relying party	✓	✓
Integrated Solution	✓	✓
Biometric Signature	✓	✓
One-Time-Password	✓	✓
Citizen Card	✓	✓
Strong Authentication (PKI)	✓	✓
USB Tokens	✓	✓
Integrated into the browser	✓	✓
Signature in signature pads	—	✓
Digital Mobile Key Pre-integration (Authentication and Authorization)	—	✓
Real-time multi-stakeholder subscription	—	✓
Subscription Rules by Intervener	—	✓
Mobile device Support	—	✓
QR Code Subscription (the client can use his device)	—	✓
Page visualization control (Auditing & Tracing)	—	✓
Dynamic contracts	—	✓
Subscription Workflow	—	✓

Why Wizzio® eSign?

Clients with digital mobile key can use this means to authenticate and sign contracts, pre-integrated with AMA services.

Allows you to hire from a distance, for example the client on his device speaking to a call center agent.

Rules of precedence, obligation, for multiple signatories, among others.

Signature on any device.

The client can sign on his trusted device.

All interactions in the document are recorded and auditable (read/scroll of fields, fill pages, etc...).

Dynamic generation of contracts based on templates and data.