

B2 ChannelMap Generator

Empowering the non-technical end-user with easy-to-use tools for rapid automation of corporate to bank host-to-host channel integration

Improving efficiency and reducing risk are key imperatives for the achievement of STP in the payment processing activities of banks and corporates.

Today, a clever, agile toolset is available that has proven its worth many times over as a reliable, robust and easy to use screen based mapping tool that is user friendly and easily integrated into existing back office processes.

The B2 ChannelMap Generator does not require users to have any technical expertise, it is the ultimate solution for automating complex tasks and designed to map of all manner of file formats, whether the files are incoming or outgoing.

“This sophisticated mapping tool is easy to use and removes the risk inherent with moving data from one form and format to another.”

B2 Channel Map Generator enables users to readily :

- Map proprietary files, incoming and outgoing
- Analyse file mapping field by field
- Import sample proprietary files for validation
- Manage multiple file formats and versions
- Test the validity of a file mapping process
- Submit files for final validation, testing and integration
- Handles exceptions with “smart” instructions for user attention
- For security, restrictions can be set to allow a single client view or across multiple clients

Simple and cost effective deployment :

- Browser based access
- No specialist IT skills required
- Integrates easily to B2’s GTS platform or with third party technology



The process of mapping and transforming files involves the selection of data from desired fields and populating the same data into the appropriate fields in the outgoing file. Whilst the process sounds relatively straight forward, the complexity and quantity of data increases the risk of errors if handled manually. Increased risk = increased cost, and often reputational damage when customer service levels are adversely effected.

There are five important steps that the B2 ChannelMap Generator can automatically handle to improve the mapping process.

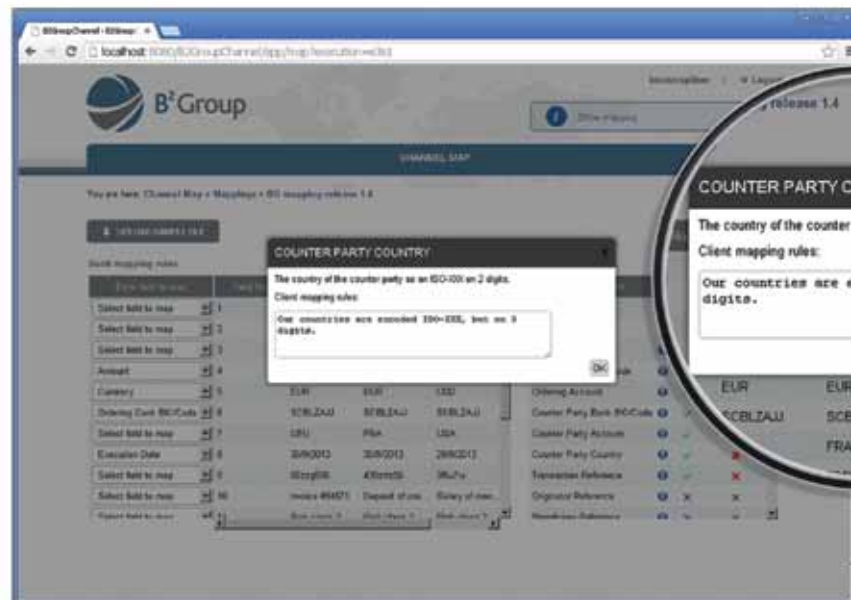
1. Simple mapping from incoming fields to outgoing fields i.e. dates
2. Simple transformation i.e. US to European decimal notation format
3. Simple validation i.e. ensure outgoing receiving fields can accommodate sequence of incoming fields
4. Sequencing where sequence of outgoing file may differ from the incoming file, and
5. Versioning and audit trail accommodates even the most complex of mapping options.

B2

B2 ChannelMap Generator

Automation of the mapping process is a vital step towards achieving efficiency gains and allows users to focus on managing exceptions and use their time more productively on other high value, operational tasks. Improving the productivity of users also adds value to the service provided by the back office to the business and enhances the job satisfaction of those involved in this mission critical aspect of payment processing.

“B2 ChannelMap Generator has been successfully deployed by banks, corporates and fund administrators.”



Would you like to know more?

Contact us at The B2 Group and we can demonstrate how the B2 Channel Suite can help you reduce costs and time-to-market.